



Throughout history, woodlands have provided food, shelter and timber for tools, homes and fuel. The modern forestry industry has become very focused on large scale plantations, however the majority of woodlands in County Durham are small, and in multiple, private ownerships.

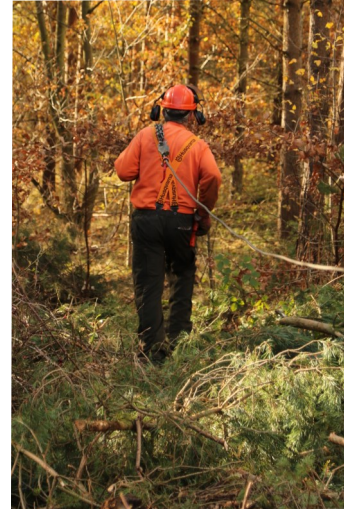


We will help woodland owners and communities reconnect with this natural heritage, bringing neglected woodlands back into active management and enhancing this valuable resource for future generations. Management will increase the biodiversity and amenity value, as well as creating local business opportunities.

The programme is led by a partnership of organisations and will run until 2023.



Durham Woodland Revival will restore woodlands and reconnect forest networks in the County Durham landscape. Local communities, woodland owners and contractors will be encouraged and supported to care for and improve ancient woodlands and an area the size of the historic Durham city centre will be planted with new woodland.



Get involved

- ✉ durhamwoodlandrevival@durham.gov.uk
- 🌐 www.woodlandrevivalproject.info
- 📘 /durhamwoodlandrevival
- 🐦 @WoodlandRevival



Woodland owners & managers

Tree planting

Even the most productive farms have room for small areas of tree planting and would benefit from hedgerow restoration. These are especially valuable where they link existing woodland to create wildlife corridors. You might be considering larger scale changes in your land use strategies.

We can provide advice on designing, planting and managing new woodlands. We are able to help at every step from guidance on tree species, mixtures, tree protection to where to plant and help with grant applications or signposting you to commercial agents who can provide additional services.

We offer funding for woodland creation of areas between 0.1 and 3ha, to plant hedgerows and parkland trees.

Sourcing trees and materials

If successful, you will be responsible for purchasing all materials and for planting. Products purchased must come from sustainable sources, eg FSC certified timber for fencing, and trees must be native species.

Choice of tree species

Our forestry officer can assist you with the design and selection of native species. A range of species is encouraged for resilience against pests and diseases. We are not currently able to fund the planting of ash due to ash dieback.

Ongoing maintenance

You will be responsible for the ongoing maintenance of the newly planted trees or woodlands. This could include weed control using approved herbicides or non-chemical treatment such as mulch mats.

Larger areas of planting

We can provide advice on Countryside Stewardship funding which is available for areas of woodland creation over 3ha and advice on additional funding from the sale of woodland carbon units.

Managing woodlands

There are lots of simple things that can be done to improve the condition



of existing woodland. It can be a source of firewood and provide timber and wood products to sell or use around the home and garden. Woodland habitats also benefit wildlife, provide shelter from wind, filter dust and noise, as well as being places to be enjoyed.

We will work collaboratively with woodland owners, to overcome some of the current economic barriers to woodland management - particularly for smaller sites.

We can offer support and training on writing woodland management plans, applying for grants, producing licences, production forecasts, marketing, health and safety, contract management, wood fuel, forest certification, tree health, restoration of Plantations on Ancient Woodland Sites (PAWS) and gaining permission from the Forestry Commission to create new woodland.



Planting in North Pennines AONB and A68 corridor

The North Pennines AONB Partnership is offering support to anyone wishing to plant new woodland in the AONB and a defined area centred on the A68 corridor in County Durham. Contact us for more details.

Contractors

Advice and support

Successful management relies on a chain between owners, contractors and end-users/processors of timber and forest products. We will work with contractors to make better links between woodland owners and the skills market. Support to contractors could include facilitating technical training days or business management advice, arranging machinery demonstrations and making better links with owners and markets.



Training

Over our lifetime, we and our partners will be offering a series of training courses to cover a range of topics related to woodland creation, management, grants available and income generation.